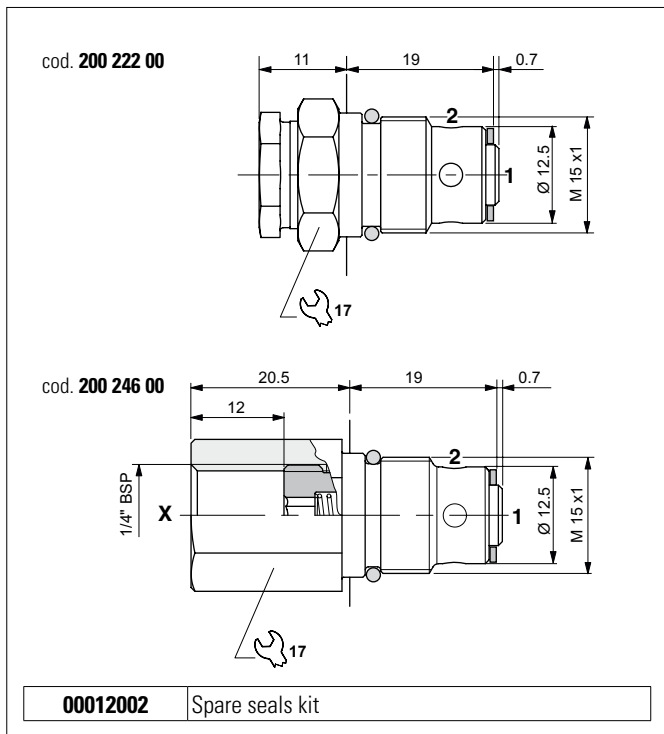


ONE-WAY CHECK VALVES

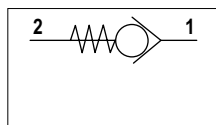


The unidirectional check valve allows oil to flow in only one direction. The guided ball seal is made of tempered and ground steel. The spring allows the valve to be mounted in any position. Also available with 1/4" BSP auxiliary pressure outlet. It has a galvanised steel body.

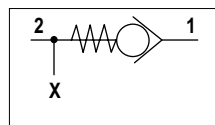
HYDRAULIC FEATURES

Max. working pressure	220 bar
Max. Flow	10 l/min
Max. Leakage (0 ÷ 5 drops/min)	0 ÷ 0.25 cm ³ /min
Crack pressure	1 bar
Hydraulic fluid	DIN 51524 Mineral oils
Fluid viscosity	10 ÷ 500 mm ² /s
Fluid temperature	-25°C ÷ 75°C
Ambient temperature	-25°C ÷ 60°C
Max. contamin. level class with filter	ISO 4406:1999 - class 19/17/14
Tightening torque	16 ÷ 19 Nm
Cavity (M15x1)	CN033001 (See section 15)

HYDRAULIC SYMBOLS



cod. 20022200

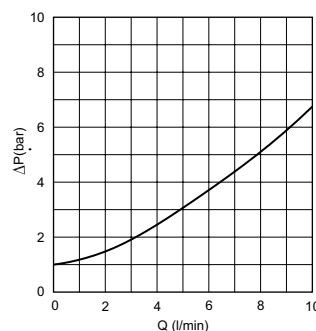


cod. 20024600

ORDERING CODE

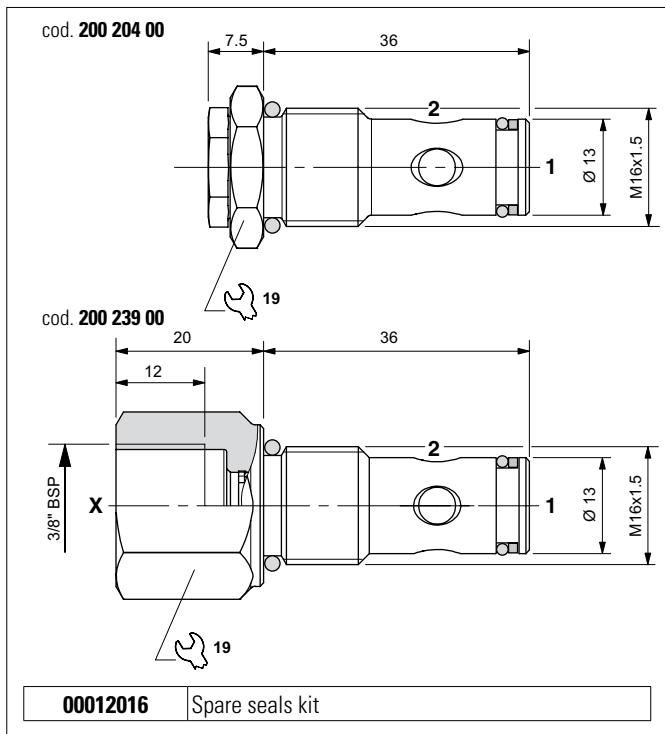
Code	Type	Weight
20022200	2 way	0.035 kg
20024600	3 way	0.042 kg

PRESSURE DROPS



Fluid used: mineral based oil with viscosity 32 mm²/s at 50°C.

ONE-WAY CHECK VALVES

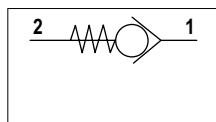


The unidirectional check valve allows oil to flow in only one direction. The guided ball seal is made of tempered and ground steel. The spring allows the valve to be mounted in any position. Also available with 1/4" BSP auxiliary pressure outlet. It has a galvanised steel body.

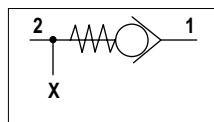
HYDRAULIC FEATURES

Max. working pressure	210 bar
Max. Flow	20 l/min
Max. Leakage (0 ÷ 5 drops/min)	0 ÷ 0.25 cm ³ /min
Crack pressure	0.5 bar
Hydraulic fluid	DIN 51524 Mineral oils
Fluid viscosity	10 ÷ 500 mm ² /s
Fluid temperature	-25°C ÷ 75°C
Ambient temperature	-25°C ÷ 60°C
Max. contamin. level class with filter	ISO 4406:1999 - class 19/17/14
Tightening torque	28 ÷ 32 Nm
Cavity (M16x1.5)	CN03704 (See section 15)

HYDRAULIC SYMBOLS



cod. 20020400

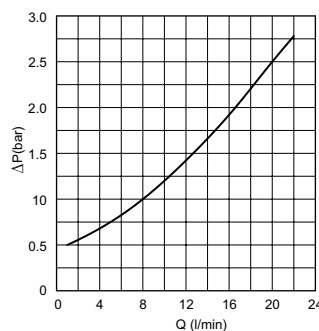


cod. 20023900

ORDERING CODE

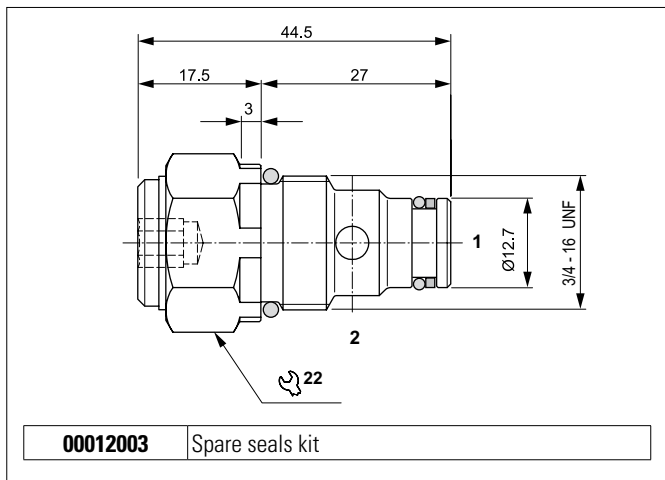
Code	Type	Weight
20020400	2 way	0.041 kg
20023900	3 way	0.070 kg

PRESSURE DROPS



Fluid used: mineral based oil with viscosity 32 mm²/s at 50°C.

ONE-WAY CHECK VALVES



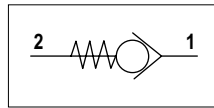
00012003 Spare seals kit

The check-valves permit one-directional oil flow only. On the opposite side the sealing is guaranteed by a hardened and ground taper steel poppet. The spring permits an easy valve installation in any position. External steel body protected on surface by zinc plating.

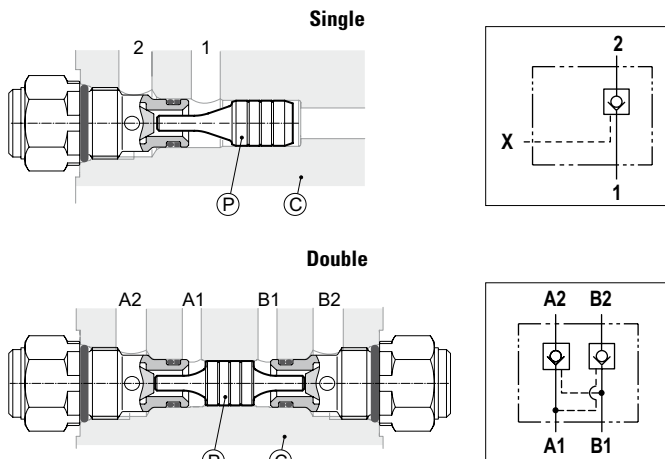
HYDRAULIC FEATURES

Max. working pressure	350 bar
Max. Flow	40 l/min
Max. Leakage (0 ÷ 5 drops/min)	0 ÷ 0.25 cm ³ /min
Hydraulic fluid	DIN 51524 Mineral oils
Fluid viscosity	10 ÷ 500 mm ² /s
Fluid temperature	-25°C ÷ 75°C
Ambient temperature	-25°C ÷ 60°C
Max. contamin. level class with filter	ISO 4406:1999 - class 19/17/14
Weight	0.08 kg
Tightening torque	25 ÷ 30 Nm
Cavity (3/4 - 16 UNF)	CD018006 (See section 15)

HYDRAULIC SYMBOL

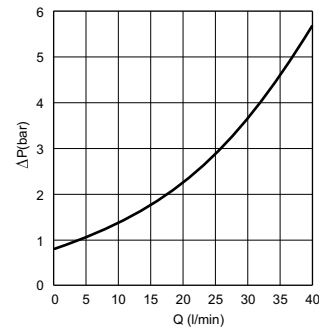


PILOT SPOOL



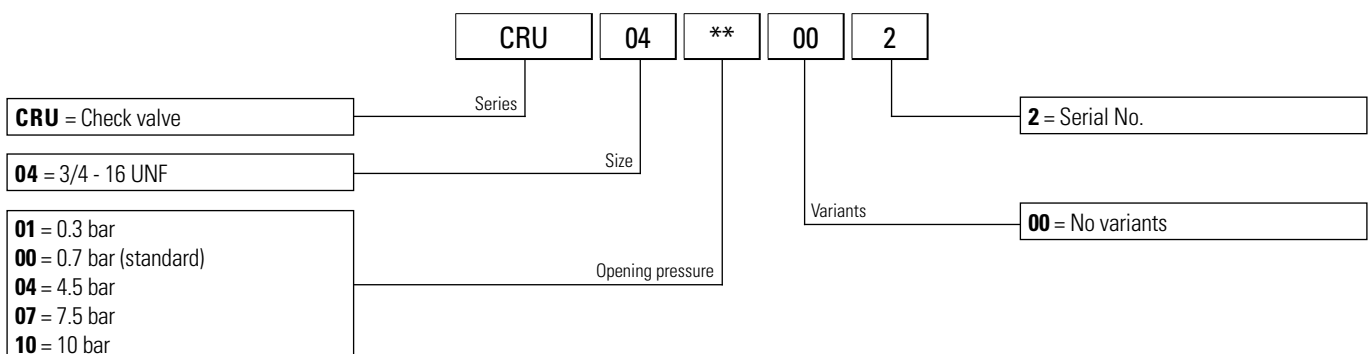
Type	Spool (P) code	Cavity (C) (See section 15)	Pilot ratio
Single	F63400002	CD018015	1 : 2.9
Double	F63400003	CD018016	1 : 2.9

PRESSURE DROPS

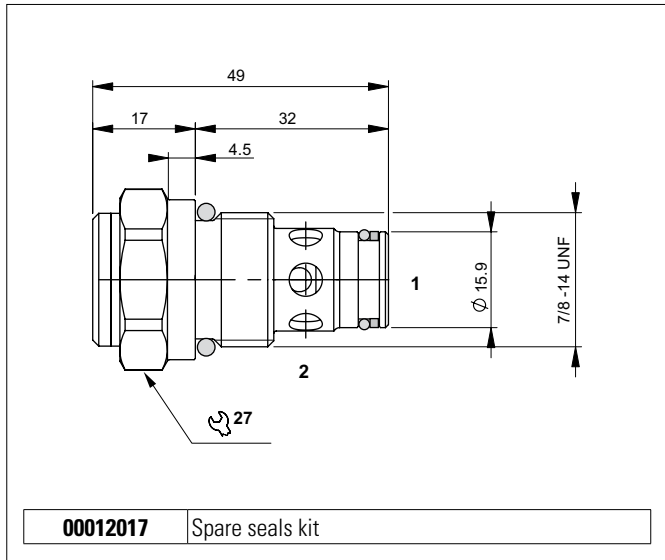


Fluid used: mineral based oil with viscosity 46 mm²/s at 40°C.

ORDERING CODE



ONE-WAY CHECK VALVES

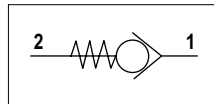


The check-valves permit one-directional oil flow only. On the opposite side the sealing is guaranteed by a hardened and ground taper steel poppet. The spring permits an easy valve installation in any position. External steel body protected on surface by zinc plating.

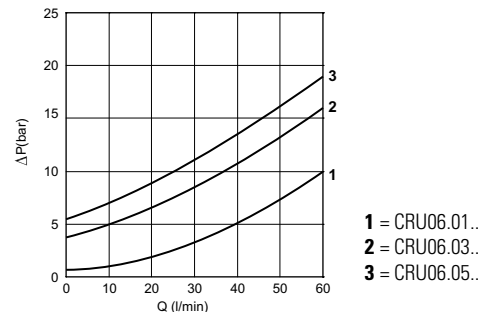
HYDRAULIC FEATURES

Max. working pressure	350 bar
Max. Flow	60 l/min
Max. Leakage (0 ÷ 5 drops/min)	0 ÷ 0.25 cm ³ /min
Hydraulic fluid	DIN 51524 Mineral oils
Fluid viscosity	10 ÷ 500 mm ² /s
Fluid temperature	-25°C ÷ 75°C
Ambient temperature	-25°C ÷ 60°C
Max. contamin. level class with filter	ISO 4406:1999 - class 19/17/14
Weight	0.10 kg
Tightening torque	35 ÷ 40 Nm
Cavity (7/8 - 14 UNF)	CD019007 (See section 15)

HYDRAULIC SYMBOL

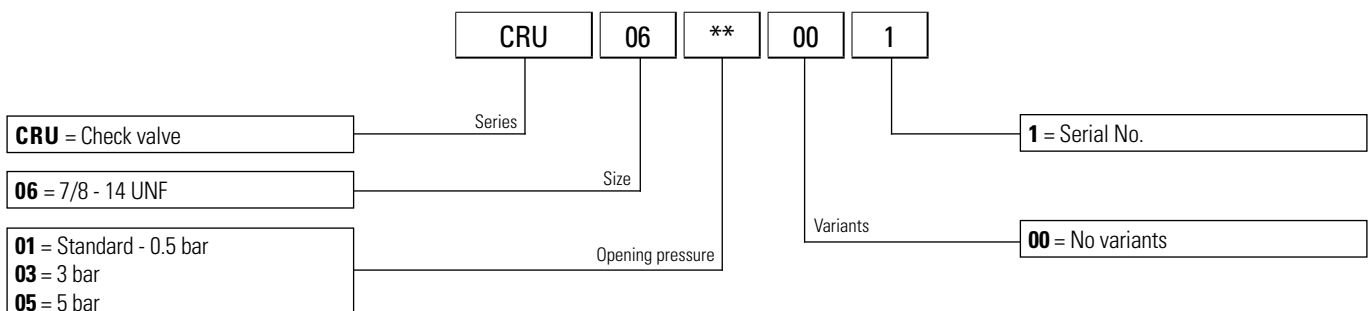


PRESSURE DROPS

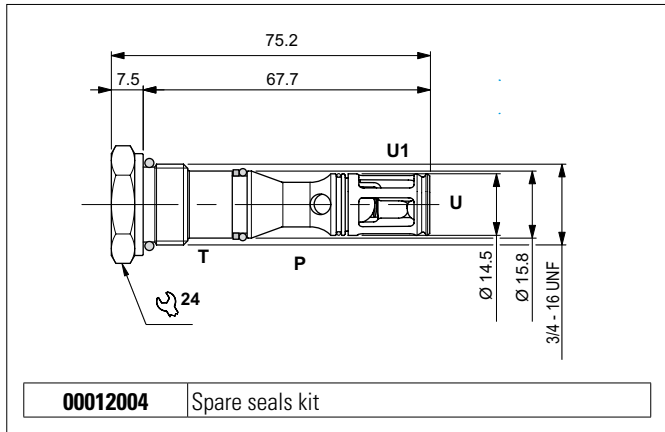


Fluid used: mineral based oil with viscosity 46 mm²/s at 40°C.

ORDERING CODE



ONE-WAY CHECK VALVES (FOR POWER PACKS SERIES FP)



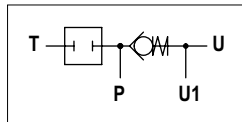
00012004 Spare seals kit

The check-valves permit one-directional oil flow only. On the opposite side the sealing is guaranteed by a ball steel poppet. The spring permits an easy valve installation in any position. External steel body protected on surface by zinc plating.

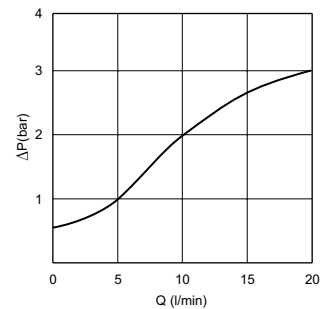
HYDRAULIC FEATURES

Max. working pressure	320 bar
Max. Flow	20 l/min
Max. Leakage (0 ÷ 5 drops/min)	0 ÷ 0.25 cm ³ /min
Hydraulic fluid	DIN 51524 Mineral oils
Fluid viscosity	10 ÷ 500 mm ² /s
Fluid temperature	-25°C ÷ 75°C
Ambient temperature	-25°C ÷ 60°C
Max. contamin. level class with filter	ISO 4406:1999 - class 19/17/14
Weight	0.09 kg
Tightening torque	25 ÷ 30 Nm
Cavity (3/4 - 16 UNF)	CD018013 (See section 15)

HYDRAULIC SYMBOL

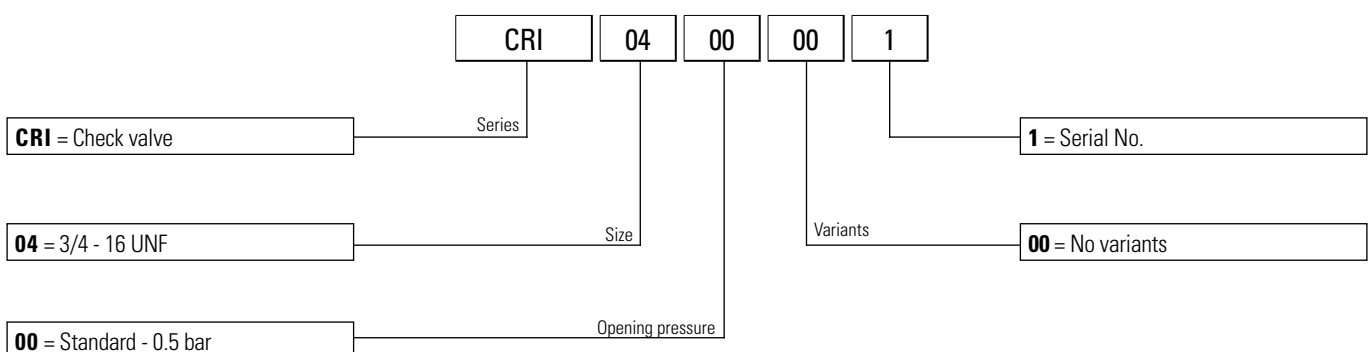


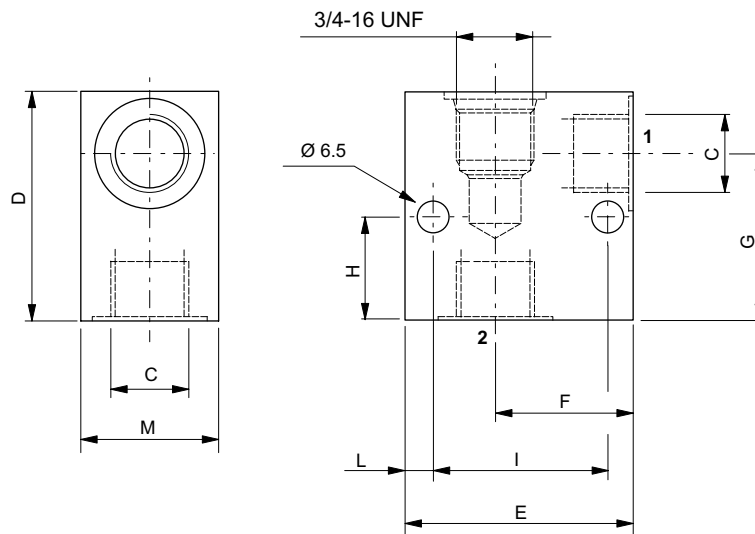
PRESSURE DROPS (P → U)



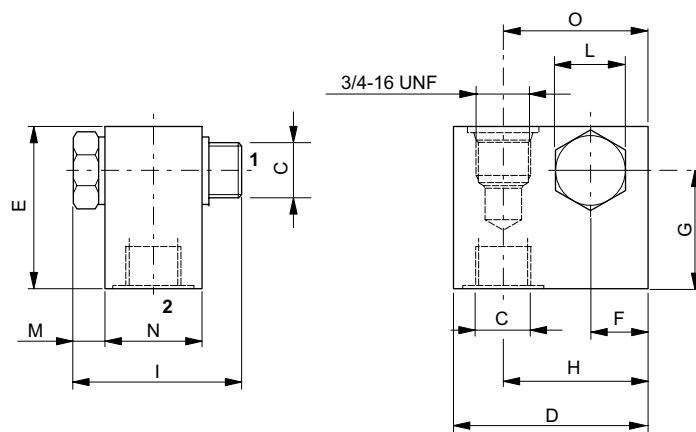
Fluid used: mineral based oil with viscosity 32 mm²/s at 50°C.

ORDERING CODE

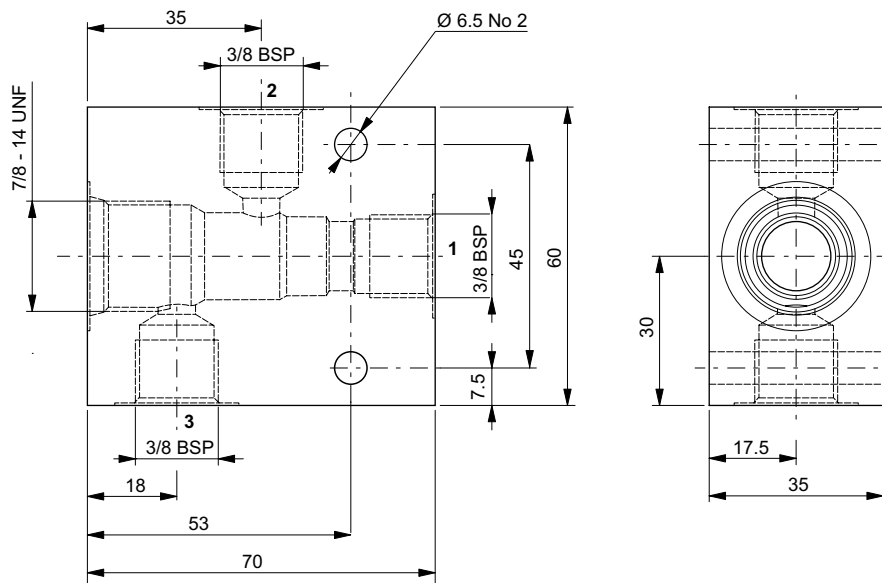




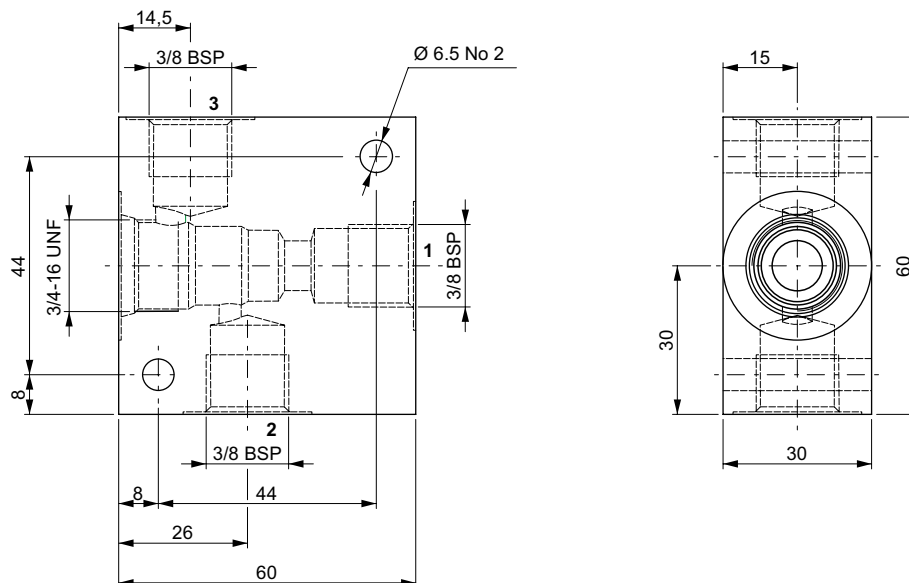
Code	C	D (mm)	E (mm)	F (mm)	G (mm)	H (mm)	I (mm)	L (mm)	M (mm)	Material	Cavity
F07100013	1/4 BSP	46	50	30,5	33	18	38	6	30	Alluminio EN AW 2011	CD018006
M18400061	3/8 BSP	55	60	38	41,25	25	45	7,5	30		
M18400071	1/2 BSP	60	60	35	41	6	48	6	40		



Code	C	D (mm)	E (mm)	F (mm)	G (mm)	H (mm)	I (mm)	L (mm)	M (mm)	N (mm)	O (mm)	Material	Cavity
17030532	3/8 BSP	50	50	16	32	35	51	22	9	30	34,5	Alluminium EN AW 2011	CD018006
V10500034	1/4 BSP	40	46	11	31	26	49	19	8	30	26		



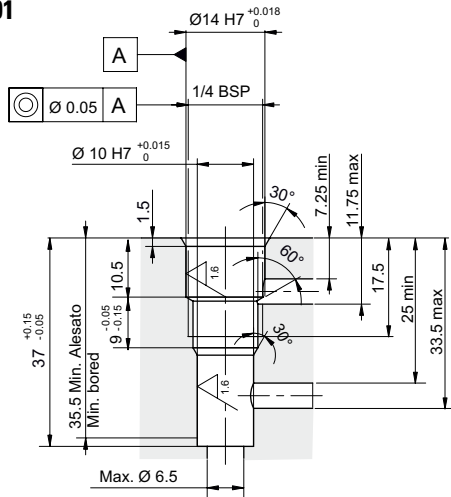
Code	Material	Cavity
M10850319	Alluminium - EN AW 2011	CD019006



Code	Material	Cavity
M10850206	Alluminium - EN AW 2011	CD018005

CA012001

1/4 BSP

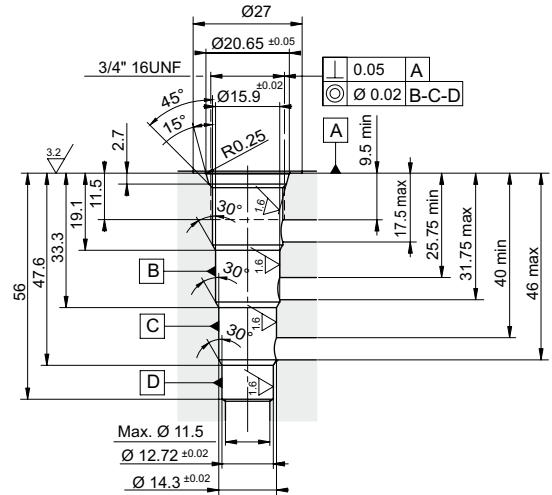


Plugs compatibility:

--	--	--	--	--

CD018001

3/4 16UNF

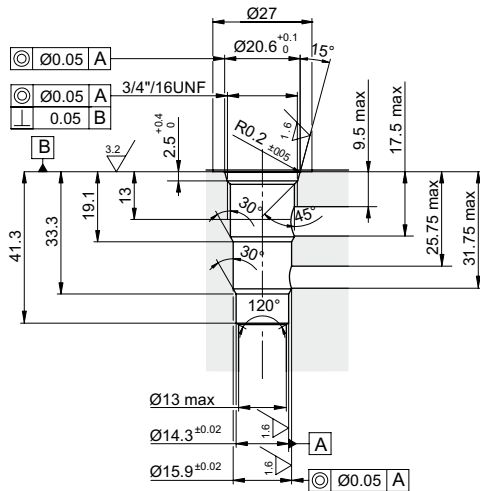


Plugs compatibility:

R78150114	R78150109	R78150111		
-----------	-----------	-----------	--	--

CD018003

3/4 16UNF

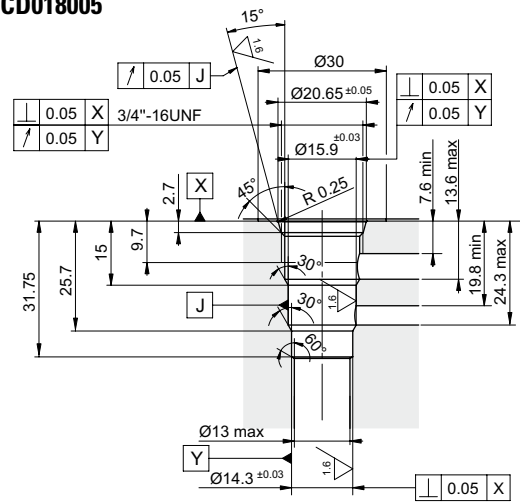


Plugs compatibility:

20001700	20001900			
----------	----------	--	--	--

CD018005

3/4 16UNF

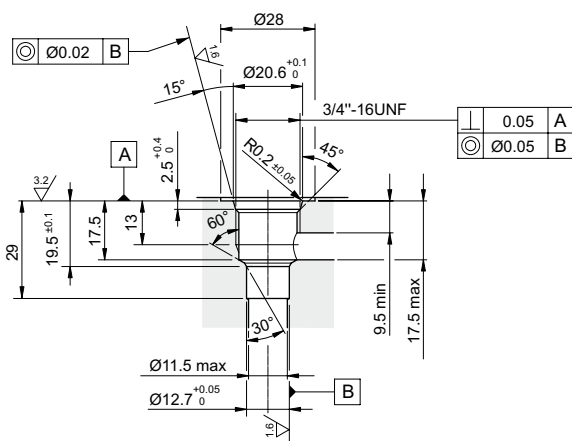


Plugs compatibility:

--	--	--	--	--

CD018006

3/4 16UNF

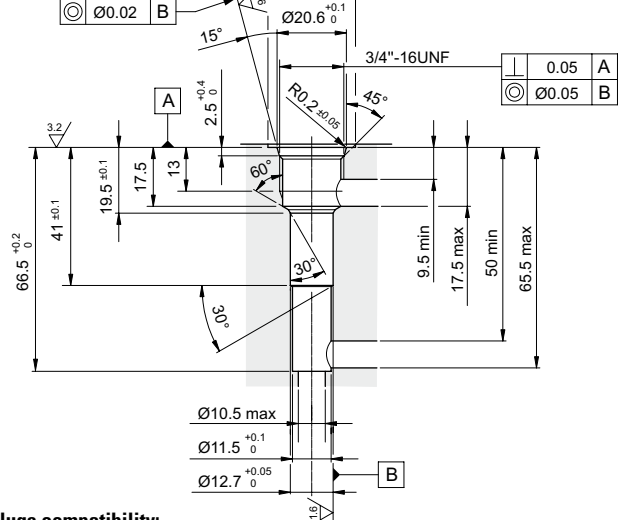


Plugs compatibility:

20001900	20001700	20003800	20009400	20018000
----------	----------	----------	----------	----------

CD018009

3/4 16UNF

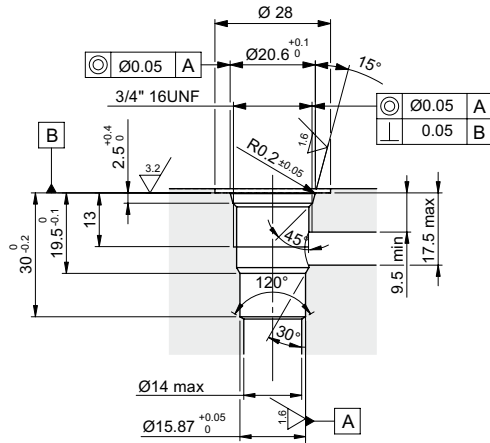


Plugs compatibility:

20001900	20001700	20003800	20009400	20018000
----------	----------	----------	----------	----------

CD018012

3/4 16UNF

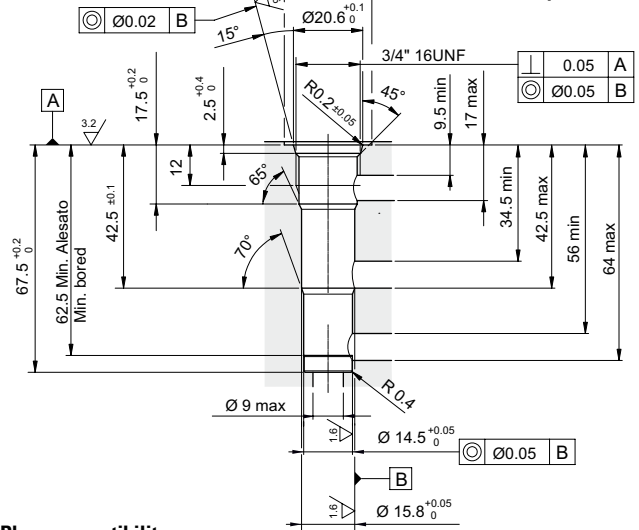


Plugs compatibility:

R78200A19	20001700	20001900		
-----------	----------	----------	--	--

CD018013

3/4 16UNF

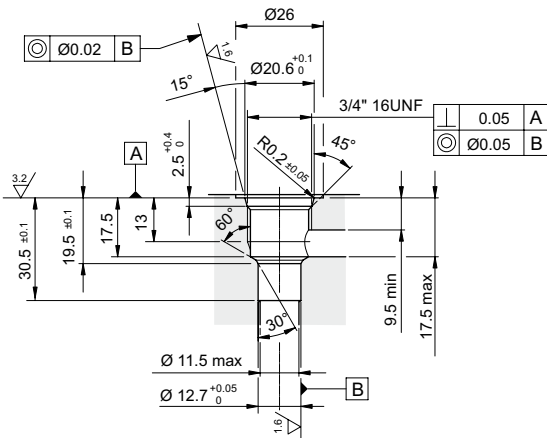


Plugs compatibility:

R78150100				
-----------	--	--	--	--

CD018014

3/4 16UNF

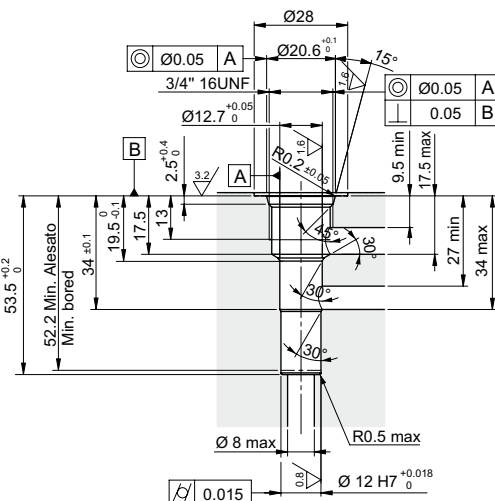


Plugs compatibility:

20001900	20001700	20003800	20009400	20018000
----------	----------	----------	----------	----------

CD018015

3/4 16UNF

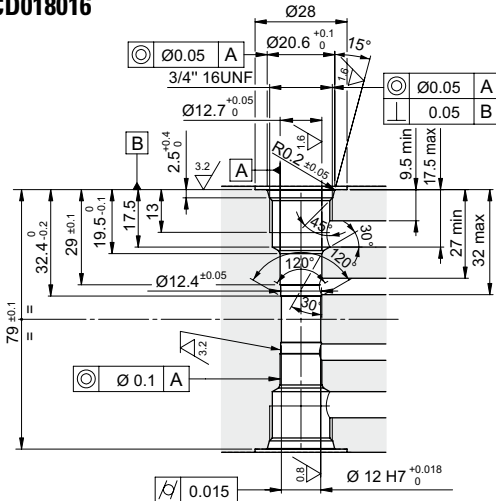


Plugs compatibility:

20018000	20001700	20001900	20003800	20009400
----------	----------	----------	----------	----------

CD018016

3/4 16UNF

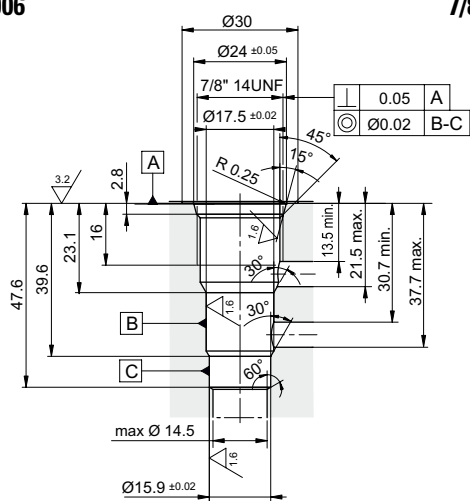


Plugs compatibility:

20018000	20001700	20001900	20003800	20009400
----------	----------	----------	----------	----------

CD019006

7/8 14UNF

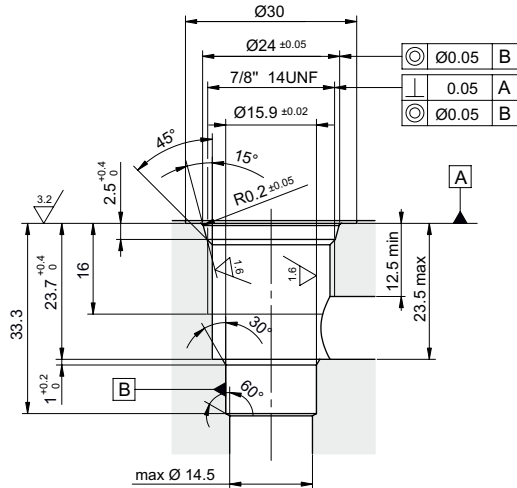


Plugs compatibility:

--	--	--	--	--

CD019007

7/8 14UNF

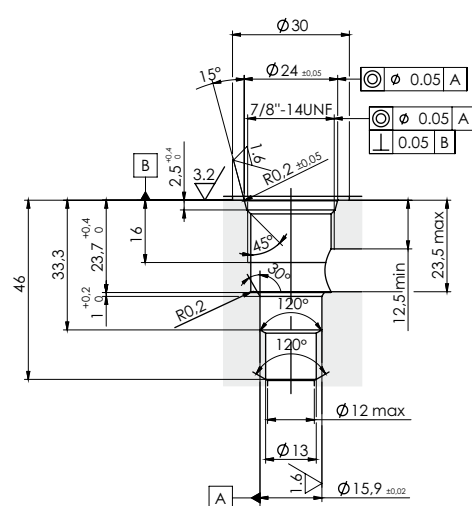


Plugs compatibility:

--	--	--	--	--

CD019011

7/8 14UNF

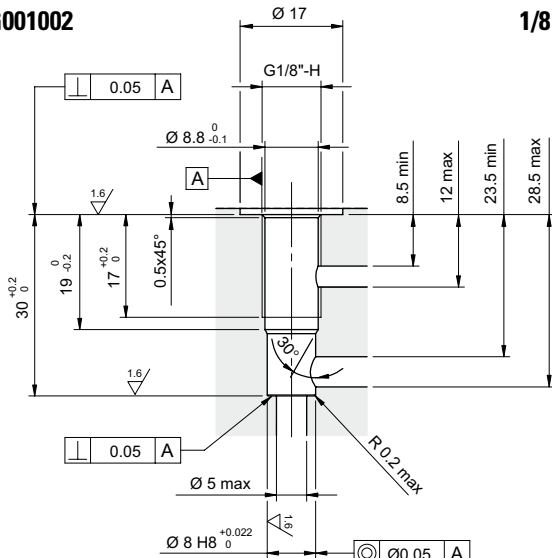


Plugs compatibility:

--	--	--	--	--

CG001002

1/8 BSP

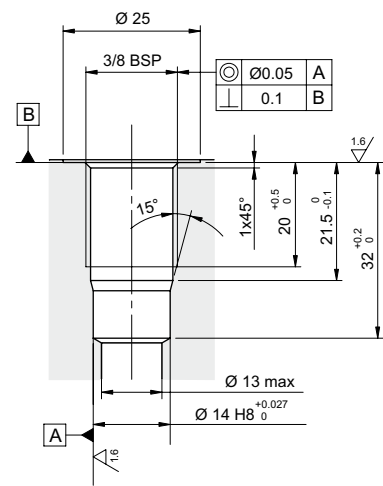


Plugs compatibility:

--	--	--	--	--

CG003004

3/8 BSP

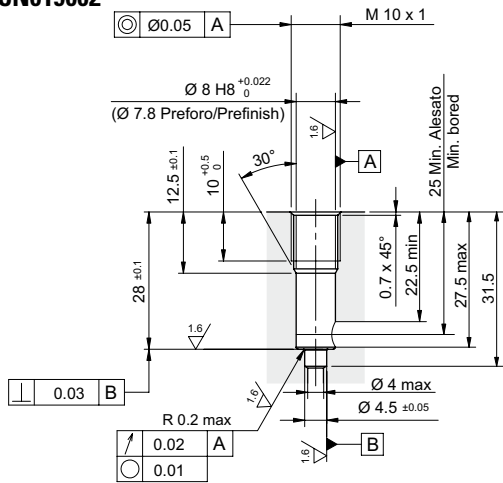


Plugs compatibility:

--	--	--	--	--

CN019002

M10X1

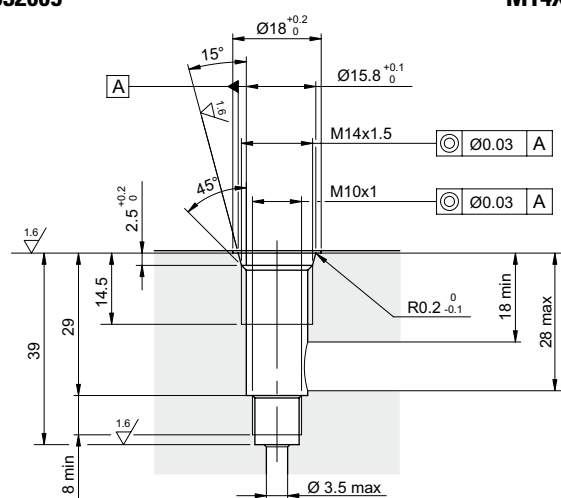


Plugs compatibility:

--	--	--	--	--

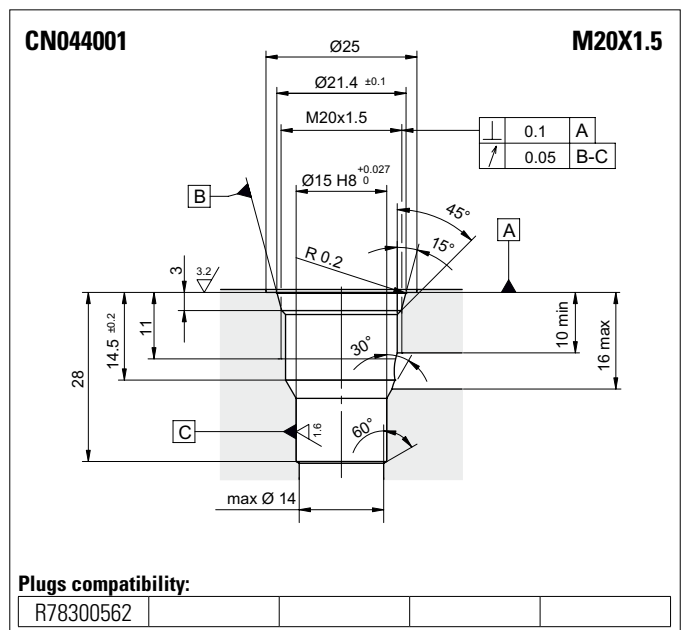
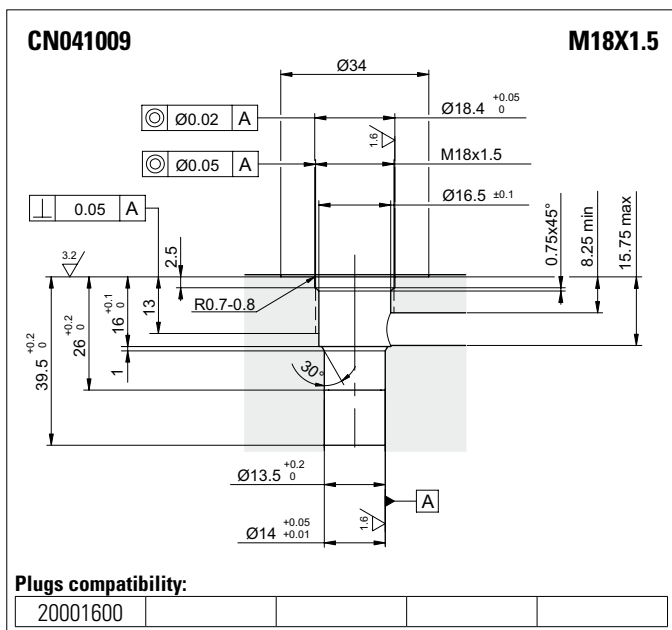
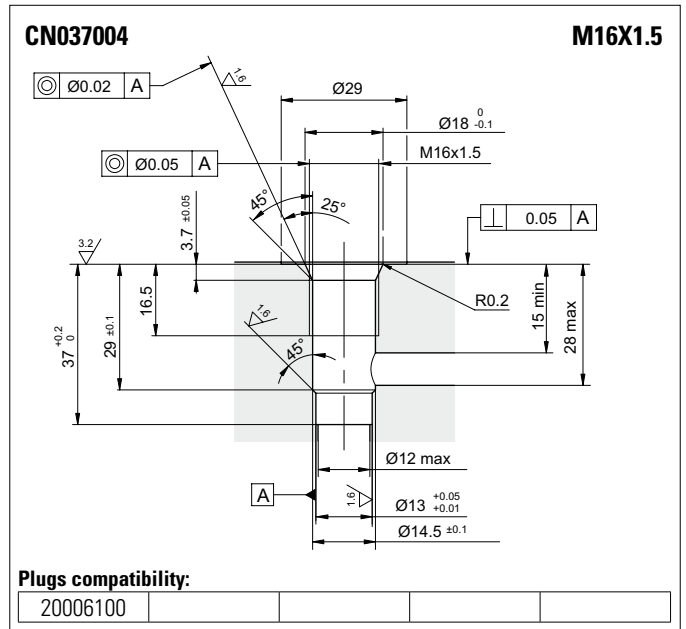
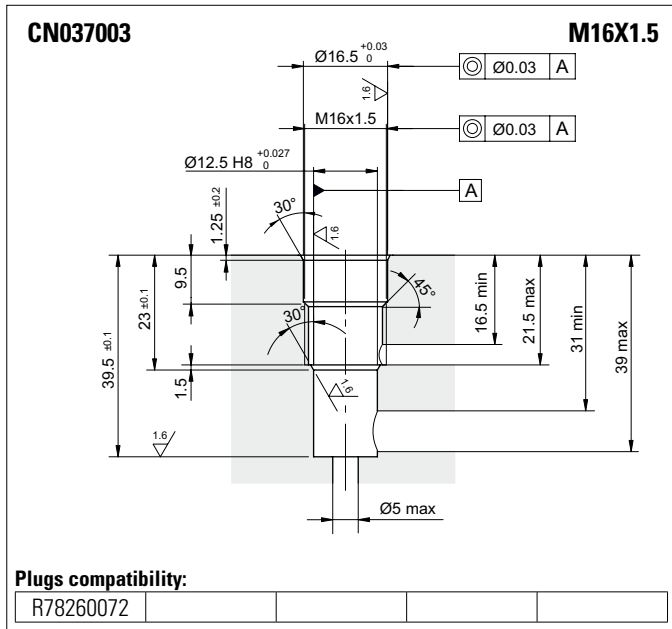
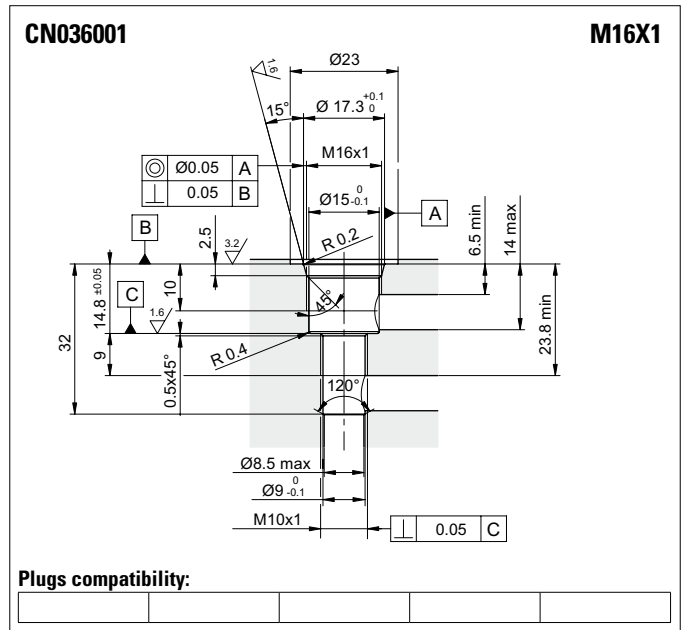
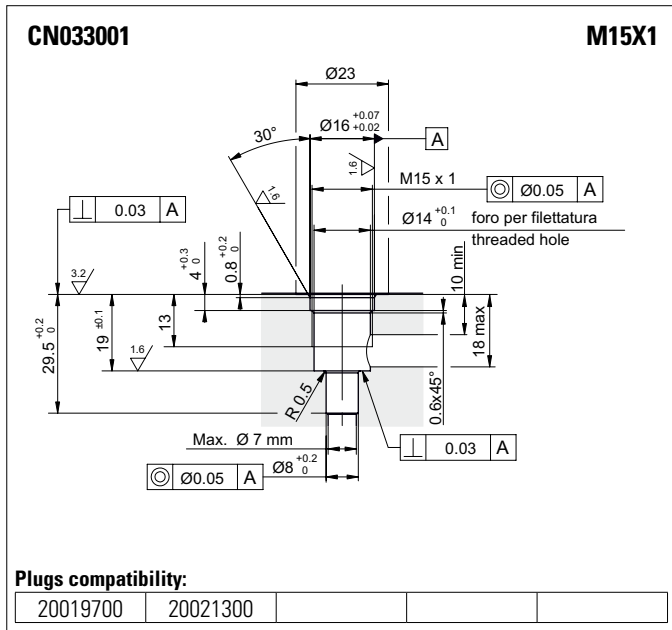
CN032005

M14X1.5



Plugs compatibility:

--	--	--	--	--



CN047002 **M22X1.5**

Technical drawing of cavity CN047002. Dimensions include: total height 60.5⁰/_{-0.1}, main body height 49.5⁰/₀, top section height 28.0^{+0.4}/₀, and bottom section height 17.5 min. Diameters: Ø34, Ø23.8^{+0.1}/₀, M22x1.5, Ø17 H8^{+0.027}/₀, and Ø19 H8^{+0.033}/₀. Surface finish: 3.2, 1.6, 1.6. Tolerances: 0.05 A, Ø0.02 B-C. Surface textures: 1/16, 1/16. Angles: 45°, 15°, 30°, 30°. Radii: R0.2. Max. Ø 10.5.

Plugs compatibility:

R78050014			
-----------	--	--	--

CN047003 **M22X1.5**

Technical drawing of cavity CN047003. Dimensions include: total height 40^{+0.5}/₀, main body height 30.6^{+0.4}/₀, and bottom section height 13.25 min. Diameters: Ø34, Ø23.8^{+0.1}/₀, M22x1.5, and Ø17.5 H8^{+0.027}/₀. Surface finish: 3.2, 1.6. Tolerances: 0.05 A, Ø0.02 B. Surface textures: 1/16, 1/16. Angles: 45°, 15°, 30°, 60°. Radii: R0.2. Max Ø16.5.

Plugs compatibility:

R78400A17			
-----------	--	--	--

CN051001 **M24X2**

Technical drawing of cavity CN051001. Dimensions include: total height 56 min., main body height 33^{+0.2}/₀, and bottom section height 19 min. Diameters: M24x2, Ø22.3, Ø22 H9^{+0.052}/₀, and Max. Ø13. Surface finish: 1.6, 2.5. Tolerances: 0.05 A, Ø0.02 B. Surface textures: 1/16, 2.5. Angles: 1x45°, 30°. Radii: R0.5.

Plugs compatibility:

R78300564			
-----------	--	--	--

CN059001 **M27X1.5**

Technical drawing of cavity CN059001. Dimensions include: total height 37.5^{+0.2}/₀, main body height 19, and bottom section height 17 min. Diameters: Ø33.5, Ø28^{+0.04}/_{-0.01}, M27x1.5, Ø25.5, and Ø12 max. Surface finish: 1.2, 1.6. Tolerances: Ø0.03 A. Surface textures: 1/16, 1.6. Angles: 30°, 45°. Radii: R0.5.

Plugs compatibility:

--	--	--	--

CN070001 **M33X2**

Technical drawing of cavity CN070001. Dimensions include: total height 77, main body height 45^{+0.2}/₀, and bottom section height 27. Diameters: Ø33, M33x2, Ø31, Ø30.75 H8^{+0.04}/₀, and Ø22. Surface finish: 1.6, 1.6. Tolerances: 0.01 A, Ø0.02 B. Surface textures: 1/16, 1.6. Angles: 1x45°, 30°. Radii: R0.5. MAX. Ø20.

Plugs compatibility:

R78400568			
-----------	--	--	--

Plugs compatibility:

--	--	--	--